

Monthly Solar Irradiation

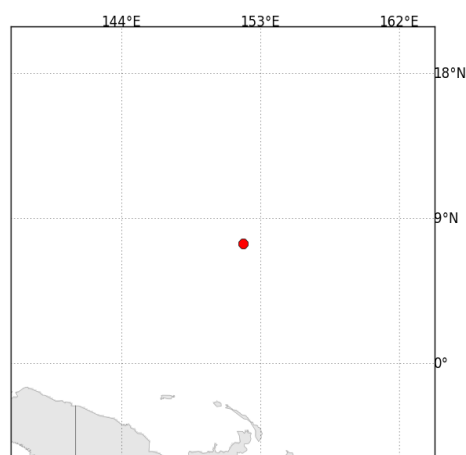
Chuuk

November 2021

Federated States of Micronesia

Document No: GSAMSR-107-202111-v01

Client: PPA
Site name: Federated States of Micronesia
Geographical coordinates: 07° 28' 03.1" N
151° 50' 59.4" E
Elevation above sea level: 4 m
Slope inclination: 2°
Slope azimuth: 346° North



Overview

A monthly summary of solar irradiation data as recorded by the on-site meteorological measurement station (shown in Figure 1) is presented in this report. GeoSUN Africa commissioned the station on 16 March 2020 and data is provided from 19 March 2020. The station is located near Chuuk in Federated States of Micronesia. GeoSUN offers further services by performing data quality checks, a scheduled site visit after six months and monitoring of the instrument cleaning. Global Horizontal Irradiation (GHI) and Diffused Horizontal Irradiation (DHI) data is provided together with meteorological data.



Figure 1: Federated States of Micronesia on-site solar and meteorological measurement station

Data Fields

Recorded ground data has a minute temporal resolution. Hourly, daily and monthly data is derived from minute data. Noteworthy data is identified by a red block on the relevant graph and clarified in Section 6. Table 1 defines the fields used in this report.

Field	Instrument	Measurement
GHI (1)	Thermopile Pyranometer (Hukseflux SR30-D1) ¹	Global Horizontal Irradiation
GHI (2)	Thermopile Pyranometer (Hukseflux SR20-T2) ¹	Global Horizontal Irradiation
GHI (1) vs (2)	GHI Difference Calculated ²	Global Horizontal Irradiation Difference
GHI (SAT)	Satellite Derived (Solargis)	Global Horizontal Irradiation
GHI (SGLT)	GHI Long-Term Satellite Derived (Solargis) ³	Global Horizontal Irradiation
GHI (1) vs (SAT)	GHI Difference Calculated ²	Global Horizontal Irradiation Difference
DHI (1)	Solar Sensor (Delta-T SPN1) ⁴	Diffused Horizontal Irradiation
DHI (SAT)	Satellite Derived (Solargis)	Diffused Horizontal Irradiation
DHI (SGLT)	DHI Long-Term Satellite Derived (Solargis) ³	Diffused Horizontal Irradiation
DHI (1) vs (SAT)	DHI Difference Calculated ²	Diffused Horizontal Irradiation Difference
GTI (Clean)	Silicon Irradiance Sensor (IMT Si-mV-85)	Global Tilted Irradiation (Cleaned) ⁵
GTI (Soil)	Silicon Irradiance Sensor (IMT Si-mV-85)	Global Tilted Irradiation (Soiled) ⁵
GTI (Clean) vs (Soil)	GTI Difference Calculated	Cleaned-Soiled GTI Difference
GTI (Monthly)	Silicon Irradiance Sensor (IMT Si-mV-85)	Global Tilted Irradiation (Cleaned Monthly) ⁵
GTI (Clean) vs (Monthly)	GTI Difference Calculated	Cleaned-Monthly GTI Difference
Temperature	Thermometer (Campbell Scientific model CS215)	Ambient Air Temperature
Temperature (SAT)	Satellite Derived (Solargis)	Ambient Air Temperature
Humidity	Hygrometer (Campbell Scientific model CS215)	Relative Humidity
Pressure	Barometer (Vaisala PTB110)	Barometric Pressure
Wind Speed	Anemometer (RM Young 03002)	Wind Speed (measured at 3 m)
Wind Direction	Wind Vane (RM Young 03002)	Wind Direction (measured at 3 m) ⁶
Rain	Rain Gauge (Texas Electronics TR-525I)	Rain
Cleaning	Push Button	Button to be pressed on cleaning event
NaN	Numerical Value Not Available	Not a Number

¹ High accuracy thermopile pyranometer (ISO 9060 secondary standard)

² See chapter 3 for calculation

³ Long-term satellite derived data averaged over multiple years, see chapter 4

⁴ Thermopile pyranometer

⁵ Measuring soiling on site, tilted at 10° South

⁶ The direction 0/360° indicates North (with 90° East)

Table 1: Nomenclature

1 Hourly Solar Irradiation Data

Figure 1.1 presents the hourly solar irradiation data. See Section 6 for further comments on the evaluation of this data.

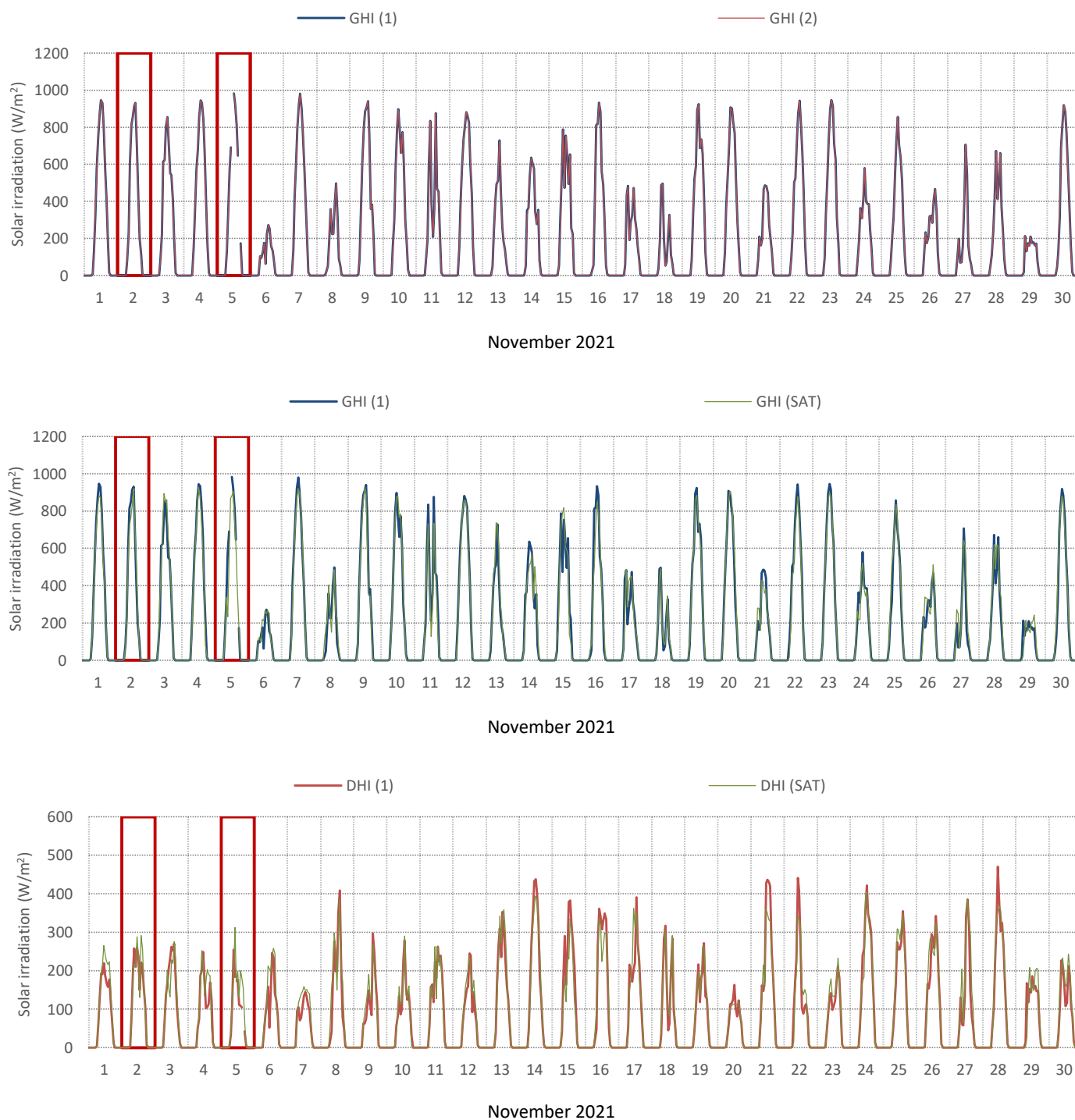


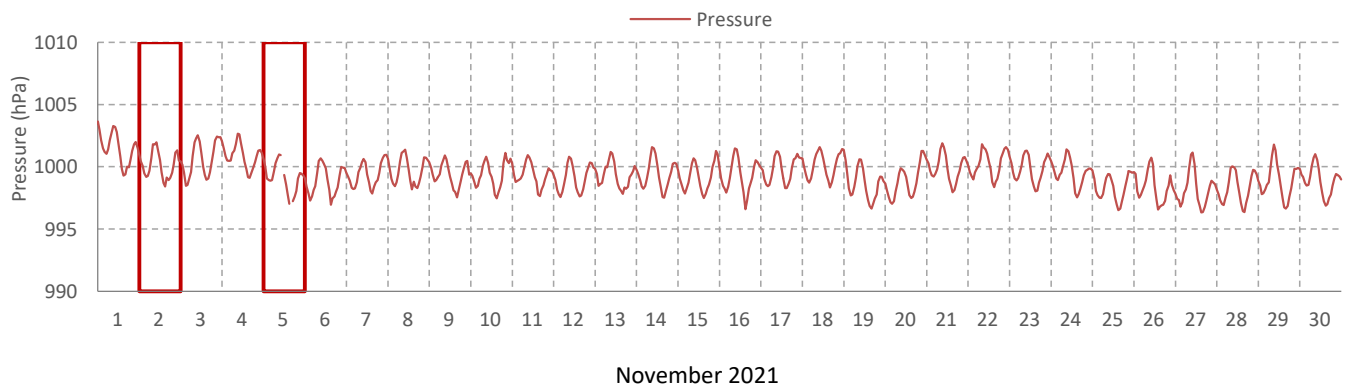
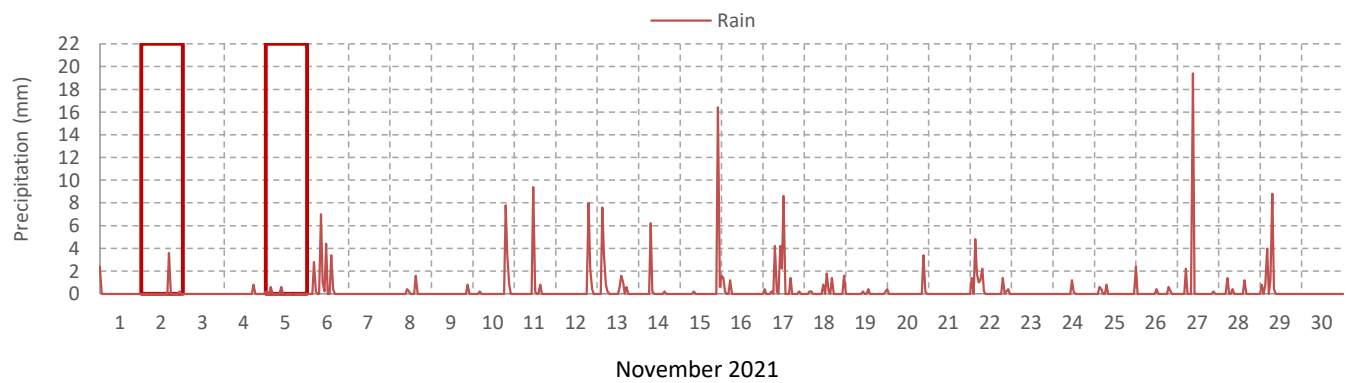
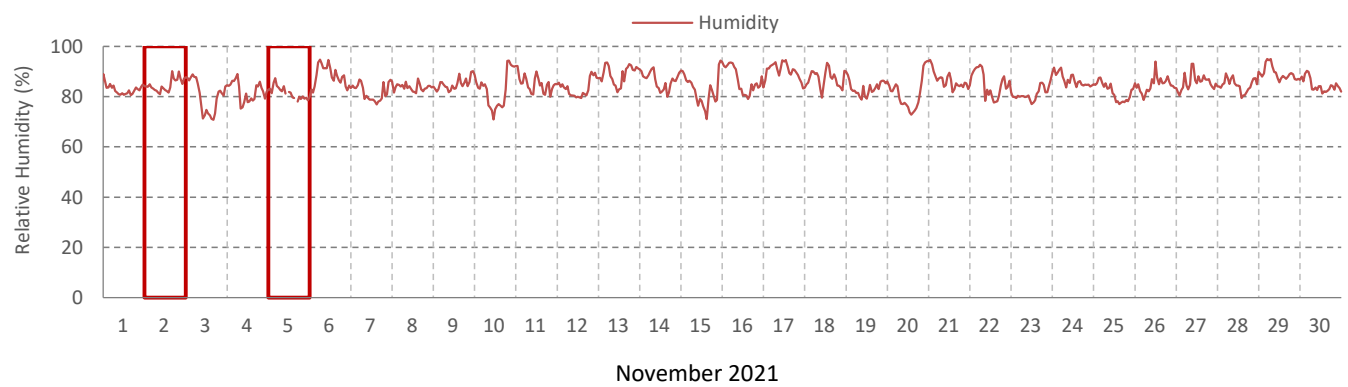
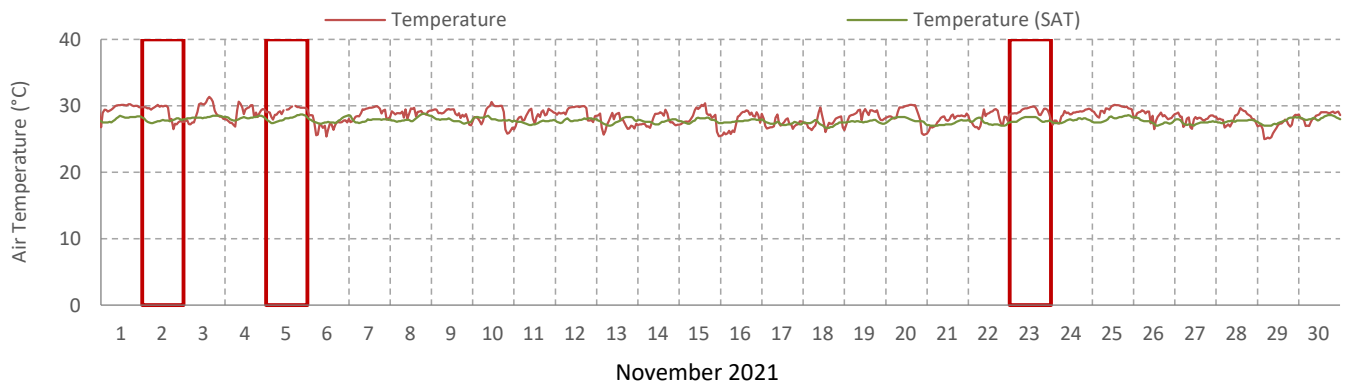
Figure 1.1 Hourly solar irradiation data

2 Hourly and Daily Meteorological Data

Table 2.1 presents the daily meteorological data. Figure 2.1 presents the hourly meteorological data.

Day	Temperature Degree Celsius	Temperature (SAT) Degree Celsius	Rain mm
01-November-21	29.82	28.06	0.00
02-November-21	28.94	27.79	3.80
03-November-21	29.06	28.27	0.00
04-November-21	28.92	28.16	1.00
05-November-21	29.29	28.08	1.20
06-November-21	27.23	27.74	19.40
07-November-21	28.99	27.86	0.00
08-November-21	28.99	28.10	2.20
09-November-21	28.77	27.80	0.80
10-November-21	28.45	28.03	12.20
11-November-21	28.58	27.53	10.40
12-November-21	29.11	27.87	10.60
13-November-21	27.53	27.70	15.80
14-November-21	27.82	27.65	6.60
15-November-21	28.30	27.79	18.80
16-November-21	27.74	27.73	2.80
17-November-21	27.34	27.36	21.60
18-November-21	27.48	27.27	6.20
19-November-21	28.66	27.61	1.20
20-November-21	28.65	27.91	3.60
21-November-21	27.97	27.35	0.00
22-November-21	28.13	27.45	14.60
23-November-21	29.24	27.95	0.00
24-November-21	28.75	27.77	1.40
25-November-21	29.47	28.06	4.20
26-November-21	28.48	27.57	1.20
27-November-21	28.03	27.46	21.80
28-November-21	28.11	27.70	3.00
29-November-21	26.90	27.58	16.00
30-November-21	28.44	28.18	0.00
Average	28.44	27.78	
Maximum	29.82	28.27	21.80
Minimum	26.90	27.27	0.00
Total			200.40

Table 2.1 Daily meteorological data



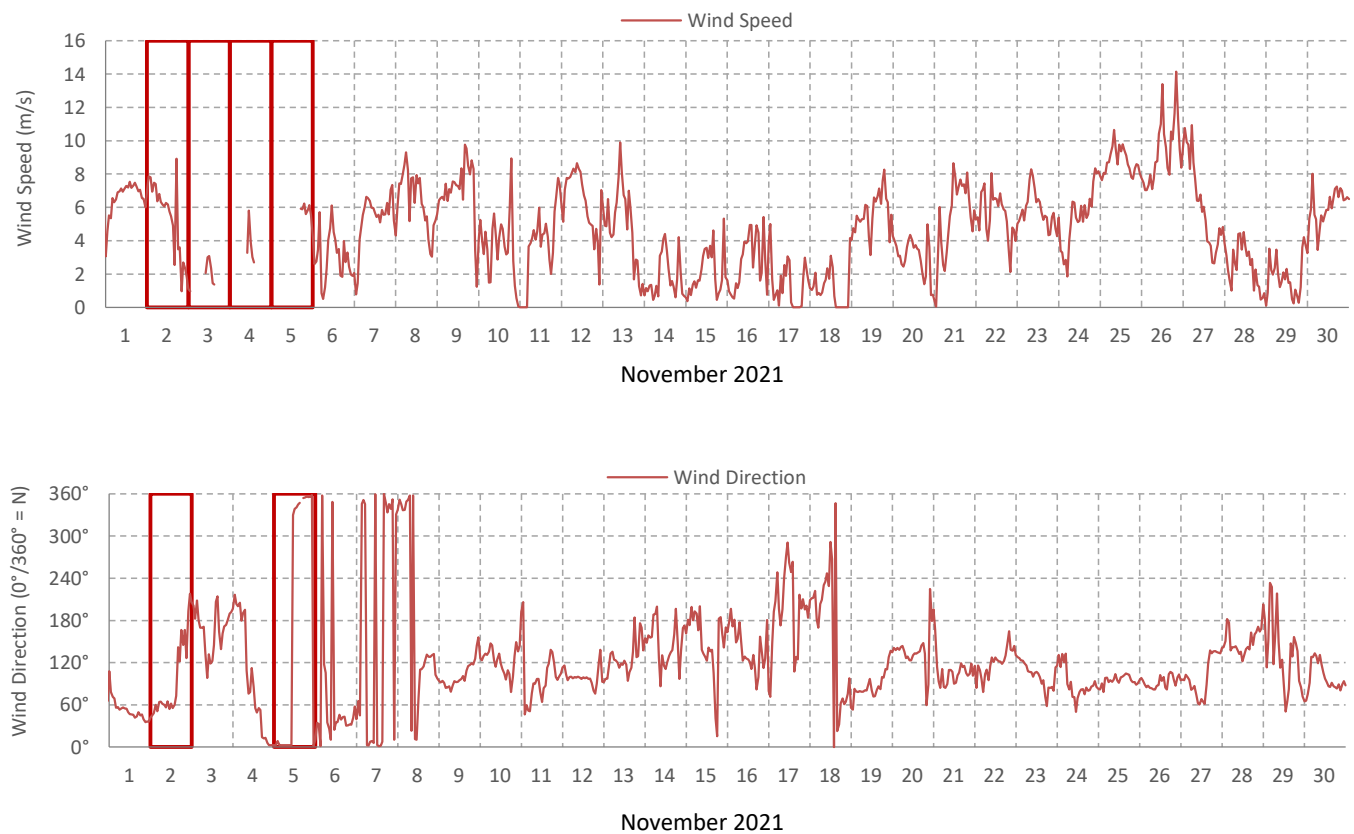


Figure 2.1 Hourly meteorological data

3 Daily Solar Irradiation Data

Table 3.1 presents the daily GHI solar irradiation data. The daily percentage difference between GHI (1) and GHI (2) as well as GHI (1) and GHI (SAT) is calculated and also presented. On overcast days the difference between the GHI values will likely be large due to low irradiation values. The difference is calculated as follows:

$$\text{GHI (1) vs (2)} = 100 \times \left(\frac{\text{GHI (1)} - \text{GHI (2)}}{\text{GHI (1)}} \right)$$

$$\text{GHI (1) vs (SAT)} = 100 \times \left(\frac{\text{GHI (1)} - \text{GHI (SAT)}}{\text{GHI (1)}} \right)$$

Day	GHI (1) kWh/m ² /day	GHI (2) kWh/m ² /day	GHI (SAT) kWh/m ² /day	GHI (1) vs (2) %	GHI (1) vs (SAT) %
01 November '21	6.54	6.52	6.19	0.27	5.37
02 November '21	5.84	5.83	5.63	0.23	3.68
03 November '21	5.64	5.60	6.14	0.73	-9.01
04 November '21	6.59	6.55	6.12	0.61	7.14
05 November '21	5.28	5.27	5.84	0.31	-10.51
06 November '21	1.70	1.70	2.01	0.33	-18.00
07 November '21	6.74	6.72	6.46	0.33	4.15
08 November '21	2.44	2.43	2.68	0.32	-9.73
09 November '21	6.34	6.32	5.84	0.25	7.83
10 November '21	6.03	6.00	6.23	0.49	-3.22
11 November '21	4.72	4.70	4.21	0.36	10.78
12 November '21	6.43	6.42	6.18	0.29	4.00
13 November '21	3.54	3.52	4.08	0.32	-15.33
14 November '21	4.19	4.14	4.16	1.12	0.80
15 November '21	5.20	5.17	5.13	0.58	1.31
16 November '21	5.40	5.38	4.91	0.31	9.00
17 November '21	3.06	3.05	3.18	0.44	-3.80
18 November '21	2.27	2.25	2.27	0.77	-0.28
19 November '21	5.95	5.93	5.85	0.20	1.58
20 November '21	6.15	6.11	6.39	0.60	-3.93
21 November '21	3.14	3.13	3.01	0.47	4.32
22 November '21	6.03	6.01	5.45	0.31	9.59
23 November '21	6.27	6.25	6.09	0.35	2.91
24 November '21	3.52	3.51	3.32	0.41	5.62
25 November '21	5.00	4.98	5.37	0.28	-7.47
26 November '21	3.01	3.00	3.13	0.33	-3.98
27 November '21	2.57	2.56	3.11	0.59	-20.95
28 November '21	3.75	3.73	4.11	0.55	-9.66
29 November '21	1.68	1.66	1.67	1.13	0.57
30 November '21	5.72	5.70	5.80	0.33	-1.36
Average	4.69	4.67	4.68	0.45*	6.53*
Maximum	6.74	6.72	6.46	1.13	-20.95
Minimum	1.68	1.66	1.67	0.20	-0.28

*Average of absolute values of daily percentage difference, representing data comparison on daily level (will differ from percentage difference of averaged GHI values, which represents monthly data comparison).

Table 3.1 Daily solar irradiation data

Table 3.2 presents the daily DHI solar irradiation data. The daily percentage difference between DHI (1) and DHI (SAT) is calculated and also presented. On overcast days the difference between the DHI values will likely be large due to low irradiation values. The difference is calculated as follows:

$$\text{DHI (1) vs (SAT)} = 100 \times \left(\frac{\text{DHI (1)} - \text{DHI (SAT)}}{\text{DHI (1)}} \right)$$

Day	DHI (1) kWh/m ² /day	DHI (SAT) kWh/m ² /day	DHI (1) vs (SAT) %
01 November '21	1.69	2.02	-19.50
02 November '21	2.08	2.14	-2.99
03 November '21	1.96	1.85	5.33
04 November '21	1.56	1.72	-10.15
05 November '21	1.13	1.77	-56.26
06 November '21	1.43	1.80	-26.22
07 November '21	1.14	1.43	-25.04
08 November '21	2.02	2.25	-11.36
09 November '21	1.49	1.58	-6.29
10 November '21	1.50	1.50	0.22
11 November '21	1.97	1.89	4.10
12 November '21	1.48	1.67	-12.57
13 November '21	2.26	2.44	-7.96
14 November '21	2.81	2.64	6.12
15 November '21	2.61	2.00	23.58
16 November '21	2.61	2.46	5.94
17 November '21	2.17	2.31	-6.64
18 November '21	1.72	1.79	-3.56
19 November '21	1.62	1.75	-8.22
20 November '21	1.08	1.08	0.09
21 November '21	2.82	2.46	12.90
22 November '21	2.10	2.02	3.79
23 November '21	1.41	1.57	-10.64
24 November '21	2.76	2.59	6.26
25 November '21	2.35	2.52	-7.04
26 November '21	2.34	2.38	-1.81
27 November '21	1.76	2.19	-24.16
28 November '21	2.70	2.70	-0.04
29 November '21	1.47	1.55	-5.36
30 November '21	1.58	1.86	-17.60
Average	1.92	2.00	11.06*
Maximum	2.82	2.70	-56.26
Minimum	1.08	1.08	-0.04

*Average of absolute values of daily percentage difference, representing data comparison on daily level (will differ from percentage difference of averaged DHI values, which represents monthly data comparison).

Table 3.2 Daily solar irradiation data

Table 3.3 presents the daily GTI data. On overcast days the difference between the sensors will likely be large due to low irradiation values. The daily difference between GTI (Clean) and GTI (Soil) as well as GTI (Clean) and GTI (Monthly) is also calculated and presented. The difference is calculated as follows:

$$\text{GTI (Clean) vs (Soil)} = 100 \times \left(\frac{\text{GTI (Clean)} - \text{GTI (Soil)}}{\text{GTI (Clean)}} \right) \quad \text{GTI (Clean) vs (Monthly)} = 100 \times \left(\frac{\text{GTI (Clean)} - \text{GTI (Monthly)}}{\text{GTI (Clean)}} \right)$$

Day	GTI (Clean) kWh/m ² /day	GTI (Soil) kWh/m ² /day	GTI (Monthly) kWh/m ² /day	GTI (Clean) vs (Soil) %	GTI (Clean) vs (Monthly) %
01 November '21	6.73	6.71	6.70	0.30	0.32
02 November '21	6.01	5.99	5.99	0.30	0.35
03 November '21	5.79	5.78	5.78	0.14	0.29
04 November '21	6.88	6.85	6.85	0.38	0.43
05 November '21	5.48	5.46	5.45	0.36	0.46
06 November '21	1.72	1.72	1.72	0.03	-0.12
07 November '21	7.04	7.02	7.01	0.35	0.36
08 November '21	2.44	2.44	2.44	-0.02	0.21
09 November '21	6.63	6.60	6.60	0.48	0.42
10 November '21	6.27	6.25	6.25	0.36	0.31
11 November '21	4.85	4.84	4.84	0.21	0.32
12 November '21	6.73	6.71	6.71	0.24	0.25
13 November '21	3.62	3.61	3.61	0.32	0.22
14 November '21	4.25	4.24	4.24	0.18	0.24
15 November '21	5.32	5.33	5.32	-0.06	0.04
16 November '21	5.55	5.55	5.54	0.09	0.21
17 November '21	3.17	3.17	3.17	0.01	-0.04
18 November '21	2.31	2.31	2.31	-0.04	-0.17
19 November '21	6.24	6.22	6.22	0.32	0.39
20 November '21	6.52	6.49	6.49	0.43	0.35
21 November '21	3.15	3.15	3.14	0.09	0.20
22 November '21	6.25	6.25	6.24	-0.01	0.20
23 November '21	6.63	6.60	6.60	0.49	0.42
24 November '21	3.58	3.58	3.57	0.09	0.20
25 November '21	5.21	5.19	5.19	0.43	0.35
26 November '21	3.03	3.03	3.02	0.08	0.19
27 November '21	2.63	2.62	2.62	0.26	0.30
28 November '21	3.76	3.76	3.75	-0.10	0.12
29 November '21	1.73	1.74	1.73	-0.03	0.05
30 November '21	6.01	6.00	5.98	0.19	0.40
Average	4.85	4.84	4.84	0.21*	0.26*
Maximum	7.04	7.02	7.01	0.49	0.46
Minimum	1.72	1.72	1.72	-0.01	0.04

*Average of absolute values of daily percentage difference, representing data comparison on daily level (will differ from percentage difference of averaged reference cell values, which represents monthly data comparison).

Table 3.3 Daily GTI data

Figure 3.1 presents the daily solar irradiation data.

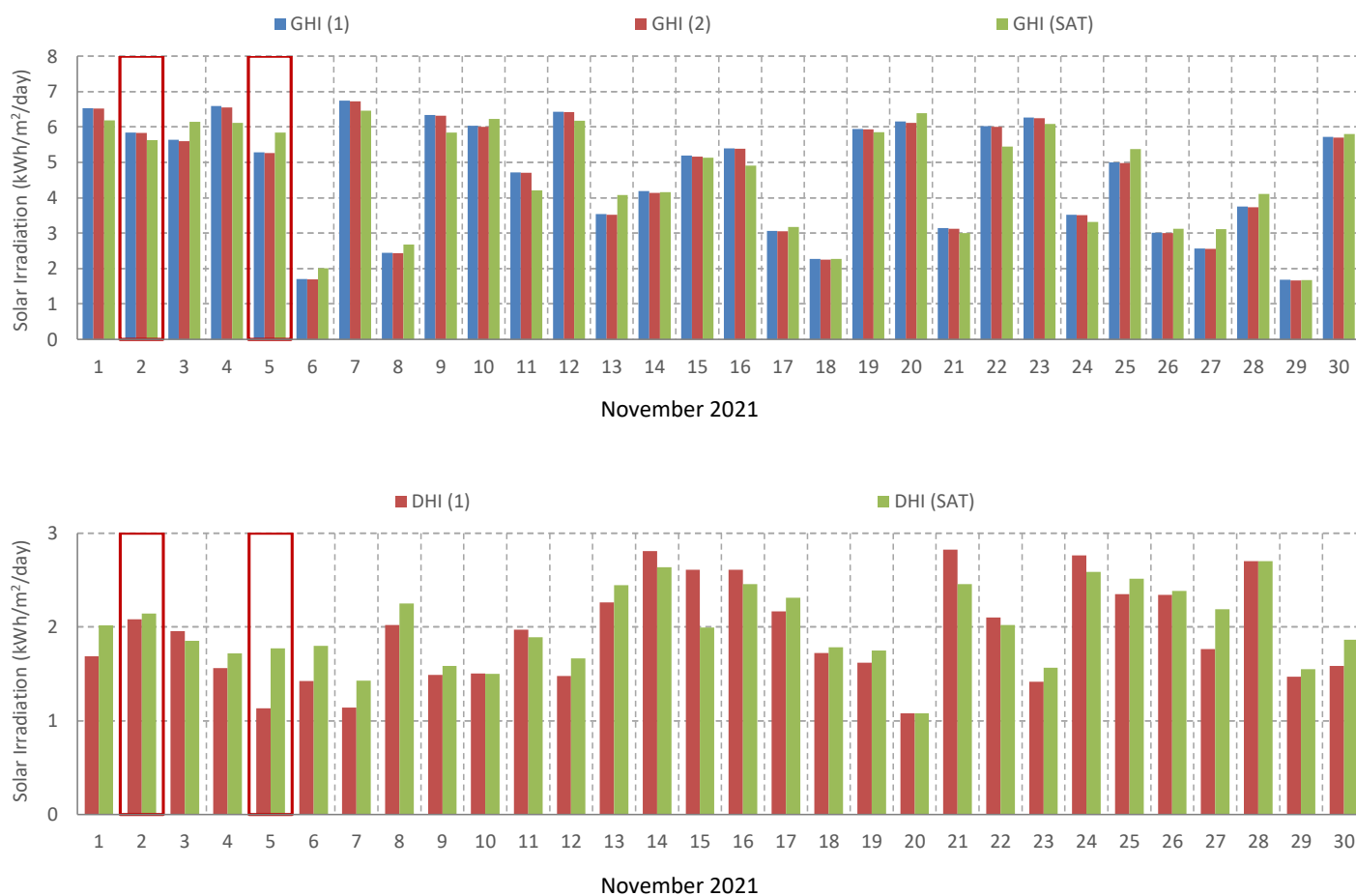


Figure 3.1 Daily solar irradiation data

Figure 3.2 presents the daily solar irradiation data (GTI) for the solar sensors measuring the effect of soiling on site. Figure 3.3 presents the difference between the cleaned and the monthly cleaned sensor.

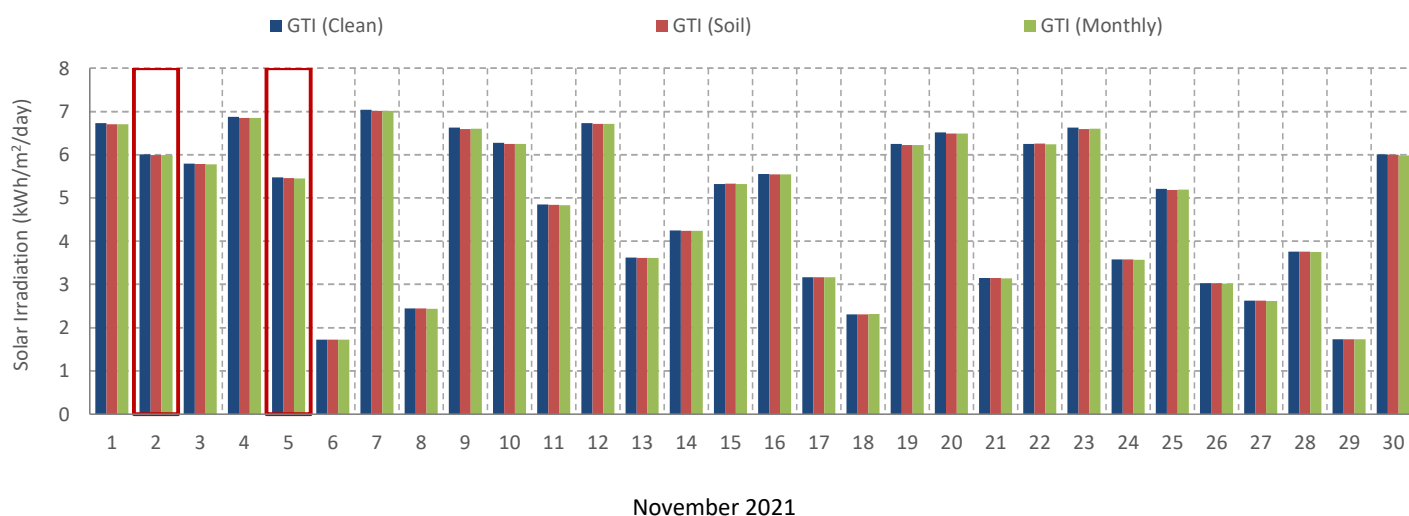


Figure 3.2 GTI daily solar irradiation data

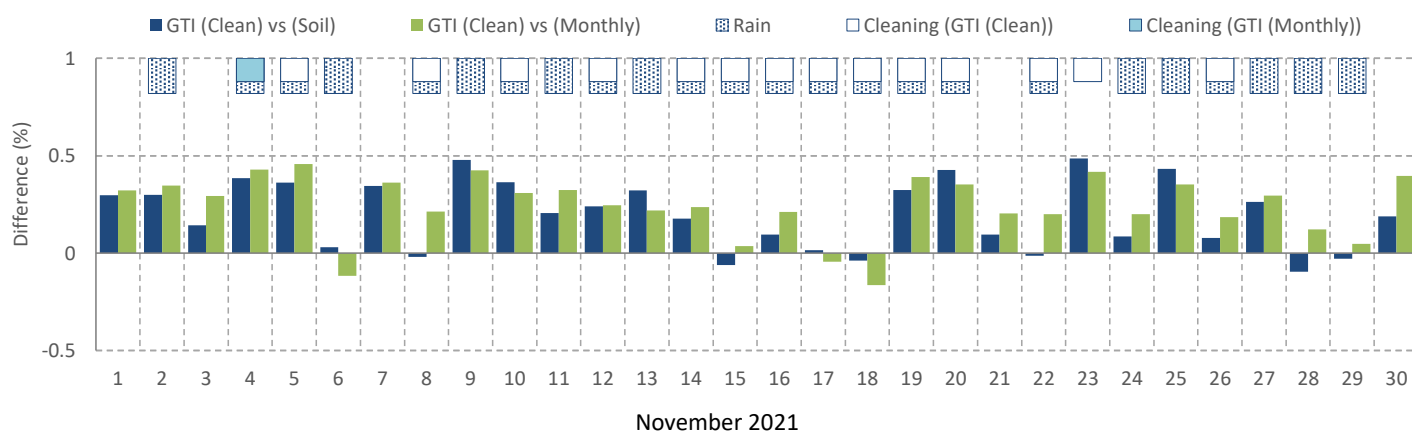


Figure 3.3 GTI daily solar irradiation difference

4 Monthly Solar Irradiation Data

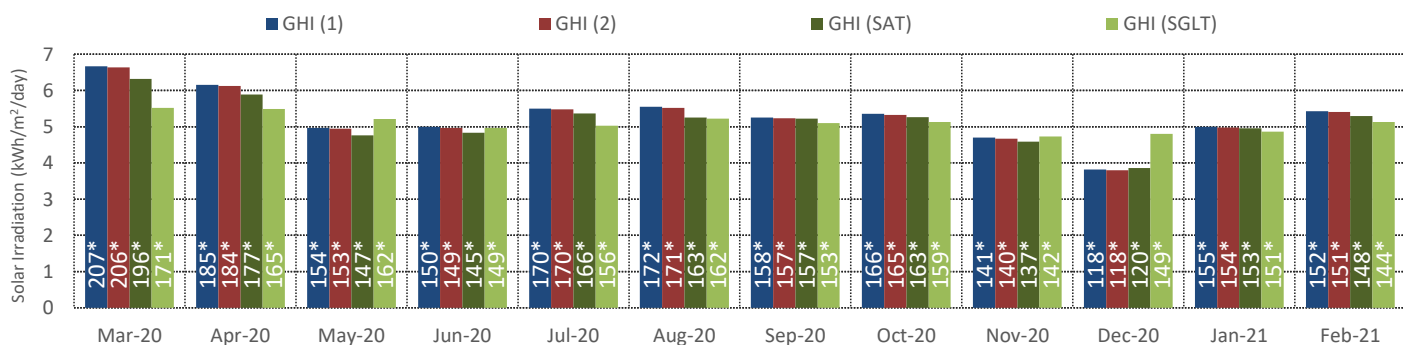
Table 4.1 presents the monthly sum of solar irradiation data as well as the accumulated annual value at time of report. Figure 4.1 presents the monthly sum of solar irradiation data as well as the average daily solar irradiation data. For more information on previous month's data see relevant month's report.

Month	GHI (1) kWh/m ² /month	GHI (2) kWh/m ² /month	GHI (SAT) kWh/m ² /month	GHI (SGLT) kWh/m ² /month	DHI (1) kWh/m ² /month	DHI (SAT) kWh/m ² /month	DHI (SGLT) kWh/m ² /month
March '20	207**	206**	196**	171	72**	82**	73
April '20	185	184	177	165	66	72	72
May '20	154	153	147	162	71	71	68
June '20	150	149	145	149	62	65	65
July '20	170	170	166	156	65	67	67
August '20	172	171	163	162	53	59	67
September '20	158	157	157	153	52	52	65
October '20	166	165	163	159	64	66	60
November '20	141	140	137	142	60	63	61
December '20	118	118	120	149	59	61	66
January '21	155	154	153	151	61	66	69
February '21	152	151	148	144	64	63	63
March '21	169	168	165	171	72	69	73
April '21	183	183	176	165	60	61	72
May '21	119	118	116	162	68	64	68
June '21	167	167	162	149	64	64	65
July '21	162	161	156	156	65	65	67
August '21	192	192	185	162	54	62	67
September '21	143	143	144	153	60	61	65
October '21	157	155	161	159	57	61	60
November '21	141	140	141	142	58	60	61
Annual*	3361	3345	3277	3279	1307	1355	1393

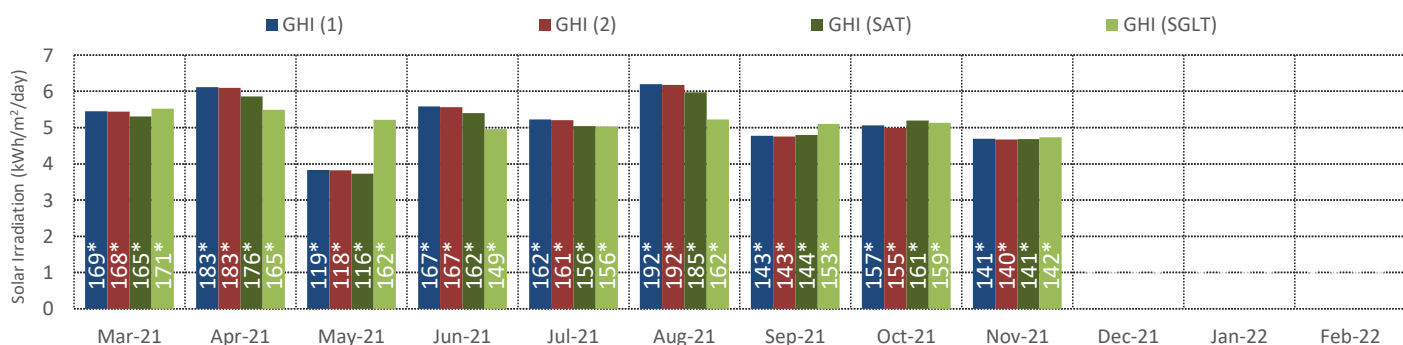
*Year to date sum (includes 21 months of measurement).

**Available day data used

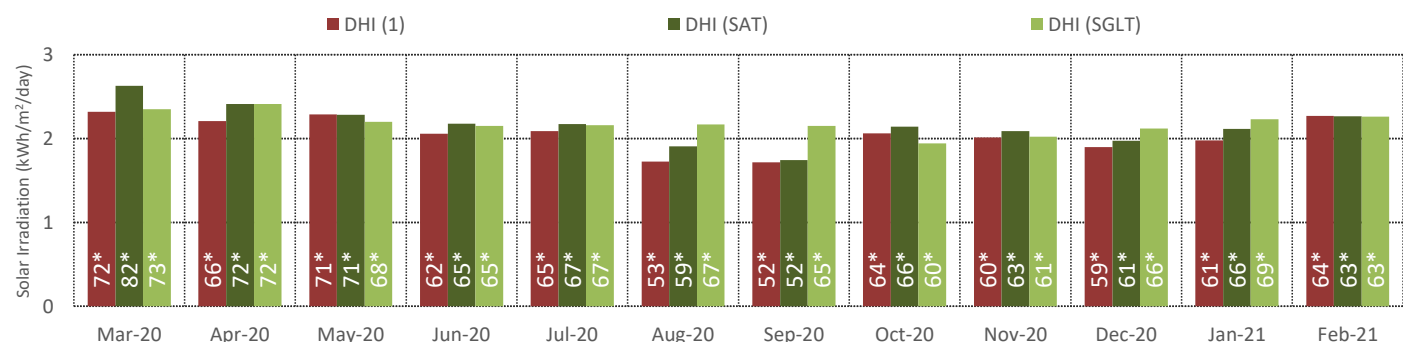
Table 4.1 Monthly sum of irradiation



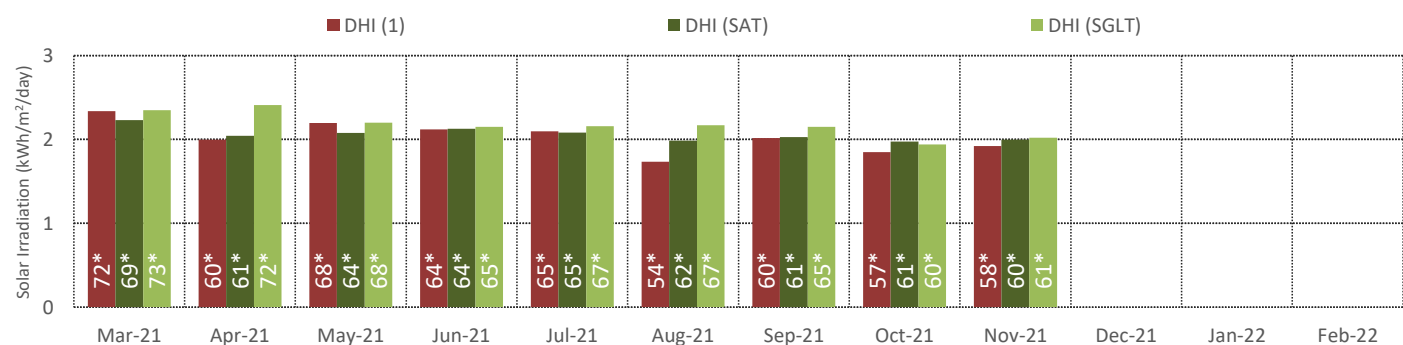
*Monthly Total Irradiation (kWh/m²/month)



*Monthly Total Irradiation (kWh/m²/month)



*Monthly Total Irradiation (kWh/m²/month)



*Monthly Total Irradiation (kWh/m²/month)

Figure 4.1 Monthly solar irradiation data

Table 4.2 presents the monthly GHI solar irradiation data. For more information on previous month's data see relevant month's report.

Month	GHI (1) kWh/m ² /day	GHI (2) kWh/m ² /day	GHI (SAT) kWh/m ² /day	GHI (1) vs (2) %	GHI (1) vs (SAT) %
March '20	6.66**	6.64**	6.31**	0.41	5.23
April '20	6.15	6.12	5.89	0.44	4.21
May '20	4.97	4.95	4.76	0.44	4.25
June '20	4.99	4.97	4.83	0.44	3.28
July '20	5.50	5.47	5.37	0.45	2.38
August '20	5.54	5.52	5.25	0.53	5.35
September '20	5.25	5.23	5.22	0.54	0.62
October '20	5.35	5.32	5.26	0.61	1.69
November '20	4.70	4.67	4.58	0.56	2.51
December '20	3.81	3.79	3.86	0.52	-1.20
January '21	5.00	4.98	4.95	0.41	0.92
February '21	5.43	5.41	5.29	0.41	2.59
March '21	5.45	5.44	5.31	0.31	2.60
April '21	6.11	6.09	5.86	0.36	4.14
May '21	3.83	3.82	3.73	0.29	2.79
June '21	5.58	5.57	5.40	0.28	3.27
July '21	5.23	5.21	5.04	0.32	3.47
August '21	6.20	6.18	5.97	0.38	3.72
September '21	4.77	4.75	4.79	0.42	-0.44
October '21	5.07	4.99	5.19	1.50	-2.49
November '21	4.69	4.67	4.68	0.42	0.13
Average	5.25	5.23	5.12	*	*
Maximum	6.66	6.64	6.31	1.50	5.35
Minimum	3.81	3.79	3.73	0.28	0.13

*See Table 4.3

**Available day data used

Table 4.2 Monthly solar irradiation data

Table 4.3 presents the overall percentage difference between the two pyranometers (GHI (1) vs (2)) as well as GHI (1) and satellite derived data (GHI (1) vs (SAT)) for the measurement campaign up to date of report. The average of the daily values are used.

Duration	GHI (1) kWh/m ² /day	GHI (2) kWh/m ² /day	GHI (SAT) kWh/m ² /day	GHI (1) vs (2) %	GHI (1) vs (SAT) %
Months					
21	5.25	5.23	5.12	0.47	2.49

Table 4.3 Solar irradiation data comparison

Table 4.4 presents the monthly DHI solar irradiation data. For more information on previous month's data see relevant month's report.

Month	DHI (1) kWh/m ² /day	DHI (SAT) kWh/m ² /day	DHI (1) vs (SAT) %
March '20	2.32**	2.63**	-13.43
April '20	2.21	2.41	-9.26
May '20	2.29	2.28	0.21
June '20	2.06	2.18	-5.88
July '20	2.09	2.17	-3.94
August '20	1.72	1.91	-10.46
September '20	1.72	1.74	-1.35
October '20	2.06	2.14	-3.69
November '20	2.01	2.09	-3.92
December '20	1.90	1.97	-3.83
January '21	1.98	2.11	-6.85
February '21	2.27	2.26	0.25
March '21	2.34	2.23	4.58
April '21	2.00	2.05	-2.42
May '21	2.20	2.08	5.32
June '21	2.12	2.13	-0.43
July '21	2.10	2.08	0.64
August '21	1.73	1.99	-14.70
September '21	2.02	2.03	-0.56
October '21	1.85	1.98	-7.01
November '21	1.92	2.00	-3.94
Average	2.04	2.12	*
Maximum	2.34	2.63	-14.70
Minimum	1.72	1.74	0.21

*See Table 4.5

**Available day data used

Table 4.4 Monthly solar irradiation data

Table 4.5 presents the overall percentage difference between the ground measured DHI and the satellite derived DHI (DHI (1) vs (SAT)) for the measurement campaign up to date of report. The average of the daily values are used.

Duration Months	DHI (1) kWh/m ² /day	DHI (SAT) kWh/m ² /day	DHI (1) vs (SAT) %
21	2.04	2.12	-3.65

Table 4.5 Solar irradiation data comparison

Table 4.6 presents the monthly GTI data. The value of this table is not in comparing whether the results of the individual instruments are close to each other, but rather the percentage difference which is indicative of the effect of soiling on the site. For more information on previous month's data see relevant month's report.

Month	GTI (Clean) kWh/m ² /day	GTI (Soil) kWh/m ² /day	GTI (Monthly) kWh/m ² /day	GTI (Clean) vs (Soil) %	GTI (Clean) vs (Monthly) %
March '20	6.47**	6.49**	6.48**	-0.35	-0.09
April '20	5.85	5.87	5.85	-0.26	-0.05
May '20	4.59	4.61	4.60	-0.34	-0.13
June '20	4.56	4.58	4.57	-0.39	-0.18
July '20	5.02	5.04	5.03	-0.35	-0.14
August '20	5.21	5.22	5.21	-0.24	-0.06
September '20	5.12	5.13	5.12	-0.06	0.12
October '20	5.43	5.43	5.42	0.02	0.18
November '20	4.90	4.89	4.88	0.18	0.29
December '20	4.00	3.99	3.99	0.20	0.28
January '21	5.20	5.20	5.19	0.13	0.21
February '21	5.51	5.51	5.50	0.09	0.15
March '21	5.39	5.38	5.38	0.07	0.18
April '21	5.79	5.80	5.79	-0.18	0.03
May '21	3.61	3.61	3.61	-0.09	0.02
June '21	5.06	5.08	5.07	-0.28	-0.07
July '21	4.80	4.81	4.80	-0.21	-0.05
August '21	5.78	5.79	5.77	-0.17	0.03
September '21	4.66	4.66	4.65	0.01	0.13
October '21	5.11	5.10	5.10	0.23	0.28
November '21	4.85	4.84	4.84	0.24	0.28
Average	5.09	5.10	5.09	*	*
Maximum	6.47	6.49	6.48	-0.39	0.29
Minimum	3.61	3.61	3.61	0.01	0.02

*See Table 4.7

**Available day data used

Table 4.6 Monthly GTI data

Table 4.7 presents the overall percentage difference between the two solar irradiance sensors for the measurement campaign up to date of report. The average of the daily values are used.

Duration	GTI (Clean) kWh/m ² /day	GTI (Soil) kWh/m ² /day	GTI (Monthly) kWh/m ² /day	GTI (Clean) vs (Soil) %	GTI (Clean) vs (Monthly) %
Months					
21	5.09	5.10	5.09	-0.09	0.06

Table 4.7 GTI data comparison

5 Station Maintenance

The cleaning events for this month is shown in Figure 5.1 (15 cleaning events were recorded).

The maximum period without cleaning was 4 days. This is considered acceptable and the cleaning was done well for this month. Irradiation measurement during a cleaning event will most likely be affected for a couple of minutes due to shading. The cleaner has been instructed to clean one of the solar irradiance sensors (GTI (Monthly)) once a month, which was done on 4 November.

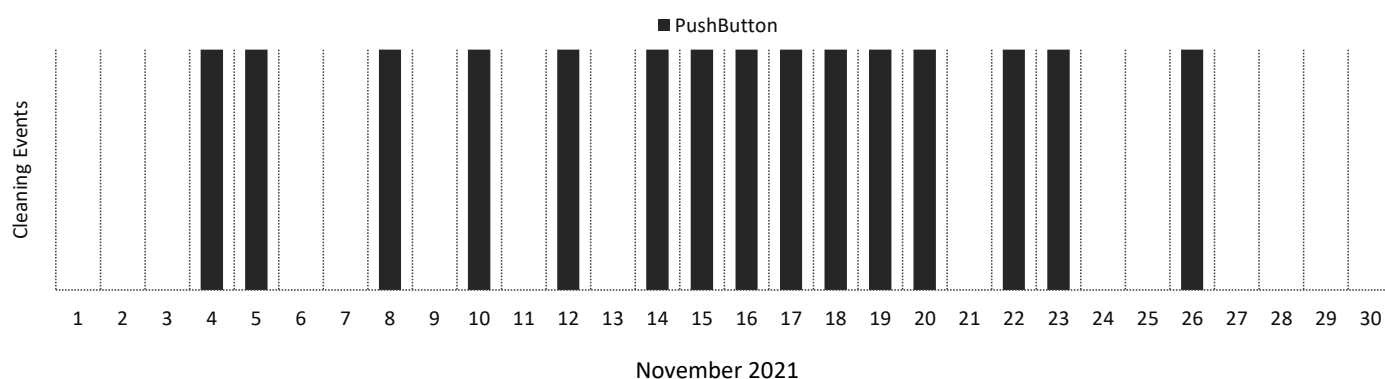


Figure 5.1: Cleaning events

6 Summary

The station is operational, the logger is running and communications are active.

The primary quality check for the GHI measurement is the comparison between the two thermopile pyranometers (GHI (1) and GHI (2)) and from this it can be concluded that the GHI data quality is good.

The monthly average of GHI (1) and GHI (2) differ with 0.42 % for the month of November 2021 and has a 0.47 % difference over the full measurement period (19 March 2020 to date).

The monthly average of GTI (Clean) and GTI (Soil) differ with 0.24 % for the month of November 2021 and has a -0.09 % difference over the full measurement period (19 March 2020 to date).

The monthly average of GTI (Clean) and GTI (Monthly) differ with 0.28 % for the month of November 2021 and has a 0.06 % difference average over the full measurement (19 March 2020 to date).

Throughout the month a total of 5 minutes of data was removed due to program upgrades, a station restart or failing quality checks, this occurred on the following days:

2 and 23 November 2021.

This is indicated with NaN values in the minute data file and a red block on the applicable graph in this report.

Water residue affected early morning irradiation measurements on the following days:

6 and 14 November 2021.

The anemometer was suspected of recording inaccurate wind speed values for extended periods from 23 September 2021. All affected data was removed.

A site visit was conducted on 5 November 2021 during which the anemometer was replaced. Data during the site visit was affected and removed.